

Table 3.37. Effect of 5% increase of ACN in the mobile phase on the detection parameters in plasma

Parameters	Amlodipine	Glimepiride	Atorvastatin
Area	829886	1307760	3961363
RSD%	0.12	0.42	0.05
Theoretical plates	3731	7470	5903
Asymmetry	1.38	1.25	1.40
Resolution	N.A	1.5	2.7

Table 3.38. Effect of 5% decrease of ACN in the mobile phase on the detection parameters in plasma

Parameters	Amlodipine	Glimepiride	Atorvastatin
Area	838034	1324787	4030478
RSD%	0.19	0.28	0.45
Theoretical plates	3673	7589	7311
Asymmetry	1.38	1.45	1.34
Resolution	0	1.3	2.9

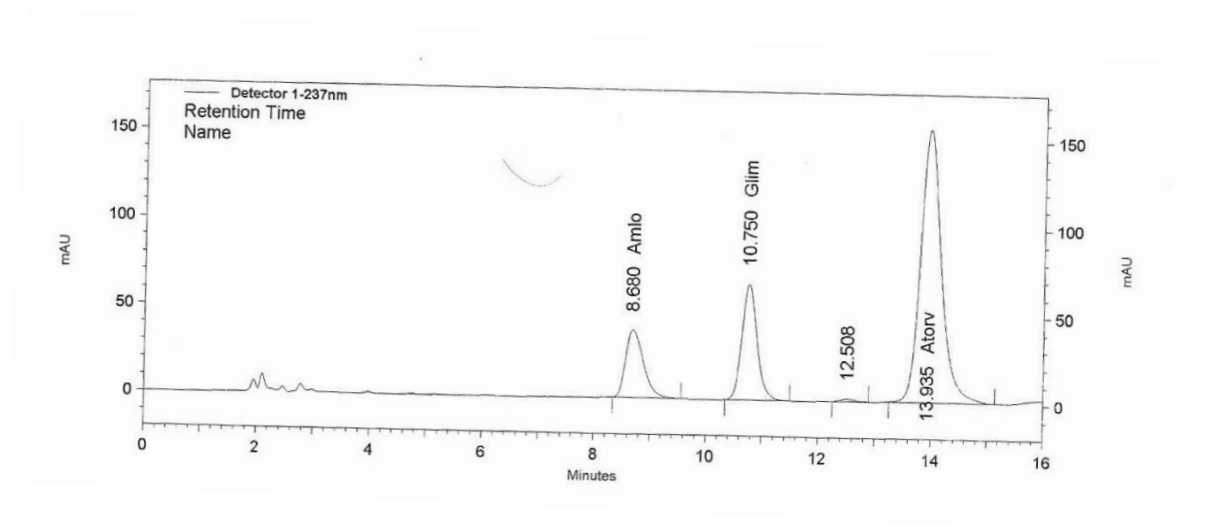


Figure 3.29. Chromatogram of amlodipine, glimepiride, and atorvastatin assayed in 5% decrease of ACN in plasma